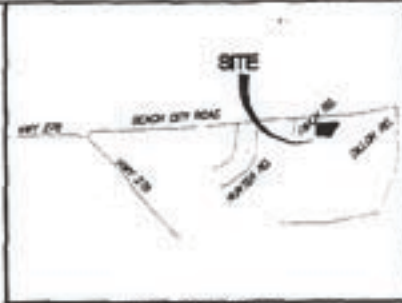
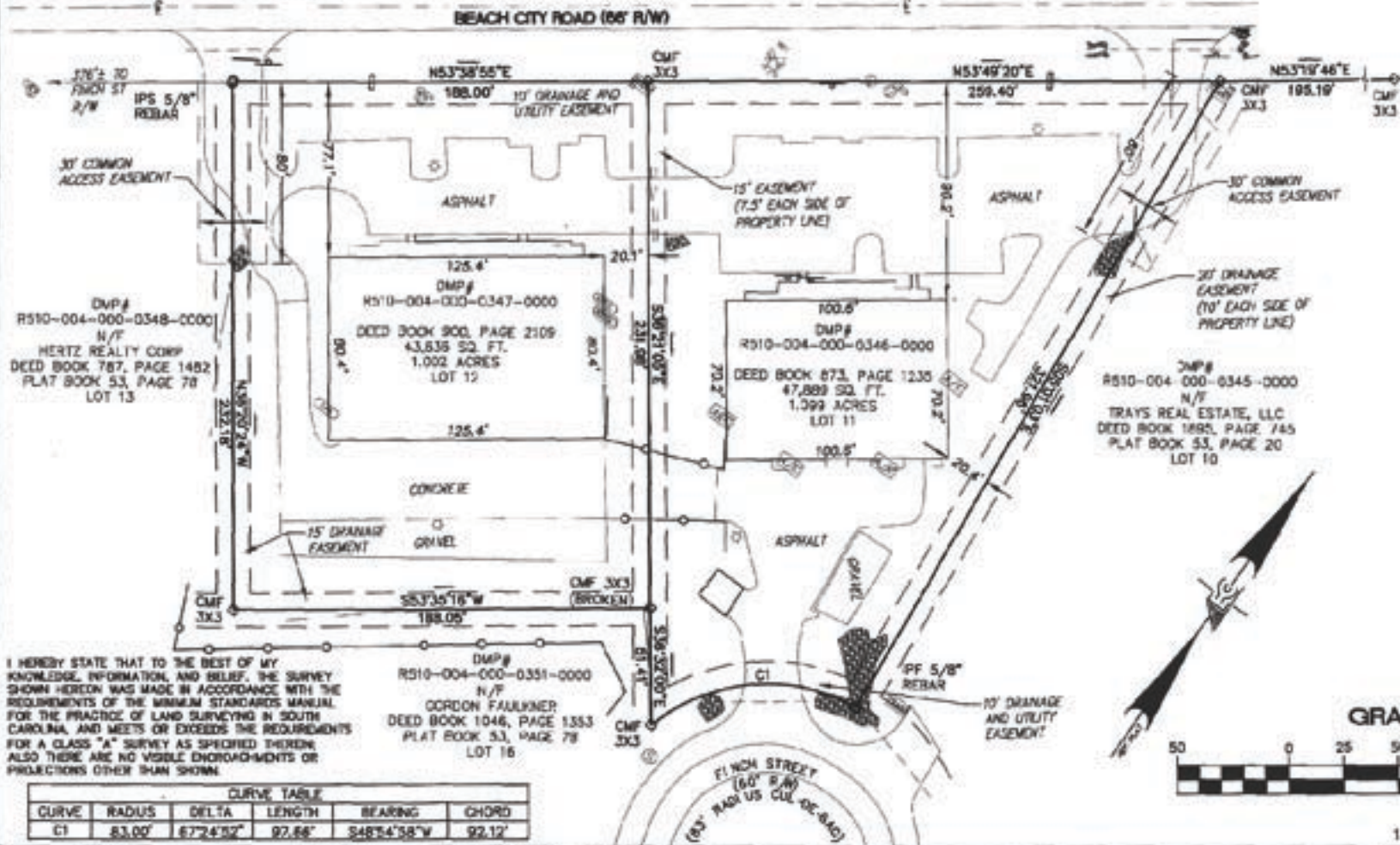


THE SAME BEING SHOWN AS LOTS 11 AND 12 ON A PLAT OF BEACH CITY COMMERCIAL CENTER DATED JULY 03, 1995 BY HUSSEY, GAY, BELL AND DEYOUNG AND RECORDED IN THE R.O.D. OFFICE FOR BEAUFORT COUNTY IN PLAT BOOK 53 AT PAGE 78.



LOCATION MAP
NCE

LEGEND

- CHAIN LINK FENCE
- STORM DRAIN PIPE
- IRON PIN FOUND
- IRON PIN SET (5/8" REBAR)
- CONCRETE MONUMENT FOUND
- TELEPHONE PEDESTAL
- WATER METER
- IRRIGATION VALVE
- HYDRANT
- WATER VALVE
- SANITARY SEWER MANHOLE
- LIGHT POLE
- MAIL BOX
- TRANSFORMER
- AIR CONDITION UNIT
- RP RAP
- ELECTRIC METER
- PROPANE TANK
- MONUMENT SIGN
- SIGN



GRAPHIC SCALE



(IN FEET)
1 inch = 50 ft.

I HEREBY STATE THAT TO THE BEST OF MY KNOWLEDGE, INFORMATION, AND BELIEF, THE SURVEY SHOWN HEREON WAS MADE IN ACCORDANCE WITH THE REQUIREMENTS OF THE MINIMUM STANDARDS MANUAL FOR THE PRACTICE OF LAND SURVEYING IN SOUTH CAROLINA, AND MEETS OR EXCEEDS THE REQUIREMENTS FOR A CLASS "A" SURVEY AS SPECIFIED THEREIN, ALSO THERE ARE NO VISIBLE ENCROACHMENTS OR PROJECTIONS OTHER THAN SHOWN.

CURVE TABLE					
CURVE	RADIUS	DELTA	LENGTH	BEARING	CHORD
C1	83.00'	67°24'32"	97.66'	S48°54'38"W	92.12'



REF. PLAT BOOK: 53, PAGE 78
 REF. DEED BOOK: SEE PLAT
 TAX MAP: SEE PLAT
 PARTY CHIEF: G.B. - J.B.
 DRAWN BY: N.L.
 CHECKED BY: G.B.
 DATE DRAWN: 09/23/04
 LAST REVISED: 09/24/04

JOB: 247047

**CLOSING SURVEY
 FOR
 HERITAGE, LLC**
 TOWN OF HILTON HEAD ISLAND
 LOTS 11 AND 12 BEACH CITY COMMERCIAL CENTER
 BEAUFORT COUNTY, SOUTH CAROLINA

Andrews Engineering Co., Inc.
 40-A Shanklin Road
 Beaufort, S.C. 29908
 (843) 466-0399 FAX (843) 466-9766